



EestiHouse 

HOUSE PROJECTS

Catalog of ready-made modular houses from the factory
fully finished and without construction on the site.
winter'21



eestihouse.com



+372 58 961 686



@eestihouse

The advantages of ready-made houses EestiHouse

Speed

The production time for a house at a factory is 3-4 weeks (+ a queue is possible). Installation time - 1-3 days. That is, you immediately get a ready-made house, which you can move in and live in.

Lack of construction work

The house is completely manufactured in the factory, no need for design, projects, order materials and construction work, while spending many months on construction and finishing. A house of 2-4 modules (and panels in the H series) arrives on the site and is installed on the foundation as soon as possible.

Modern design and sustainable finishes

Stylish exterior and thoughtful interior made entirely of environmentally friendly materials - wood and plywood. Every centimeter of space is designed for comfortable use.

Fully prefabricated and quality control

The house is completely made in the factory, both construction and finishing inside and outside. It is the production assembly that allows you to control all stages and create a quality product.

Energy efficiency

All EestiHouse houses are insulated with modern heat-efficient sprayed materials, which allows them to be operated all year round with low heating costs.

Benefit

The mod allows you to save one of the most valuable resources - time, because you can move to your country house as soon as possible. At the same time, the cost of a finished house with finishing is lower than the cost of a studio on the outskirts of the city.



Series H Model H66

Living area - 47,5 m²
With terrace - 66,1 m²



@eestihouse



+372 58 961 686



eestihouse.com





Model H66 can be made with two bathrooms
(the second bathroom is located instead of a part of the dressing room).

	Price
EestiHouse H66 in the Comfort package with full finishing and communications, heating	

*detailed description of equipment at the end of the catalog





Series X

Living area - 16,8 m²
With terrace - 25,5 m²



@eestihouse

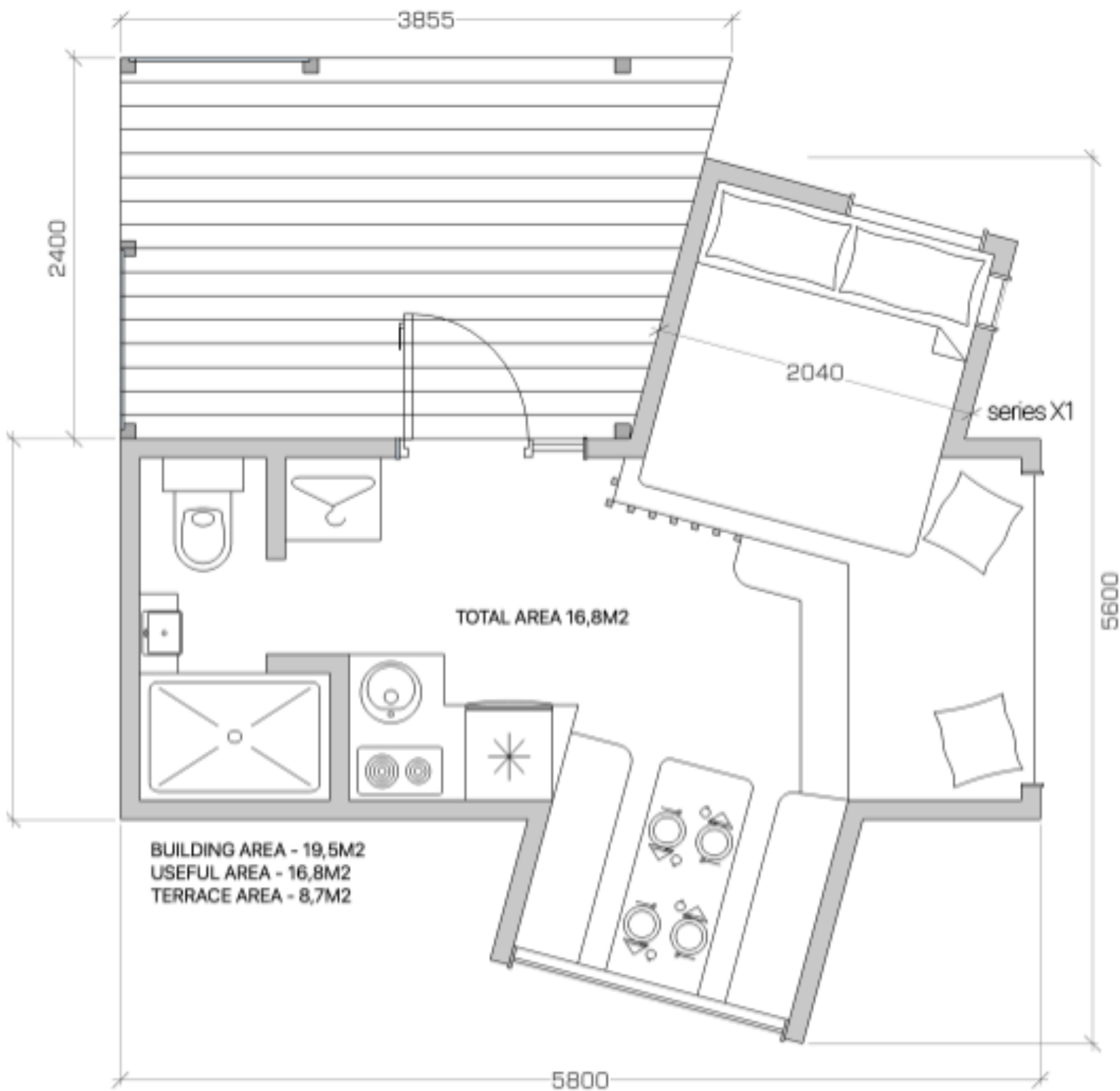


+372 58 951 686



eestihouse.com





	Price
EestiHouse model X with terrace in the Comfort package, with full decoration and communications, heating	

* detailed description of the complete set at the end of the catalog



Series M2

Living area - 19,1 m²
With terrace - 30,6 m²



@eestihouse

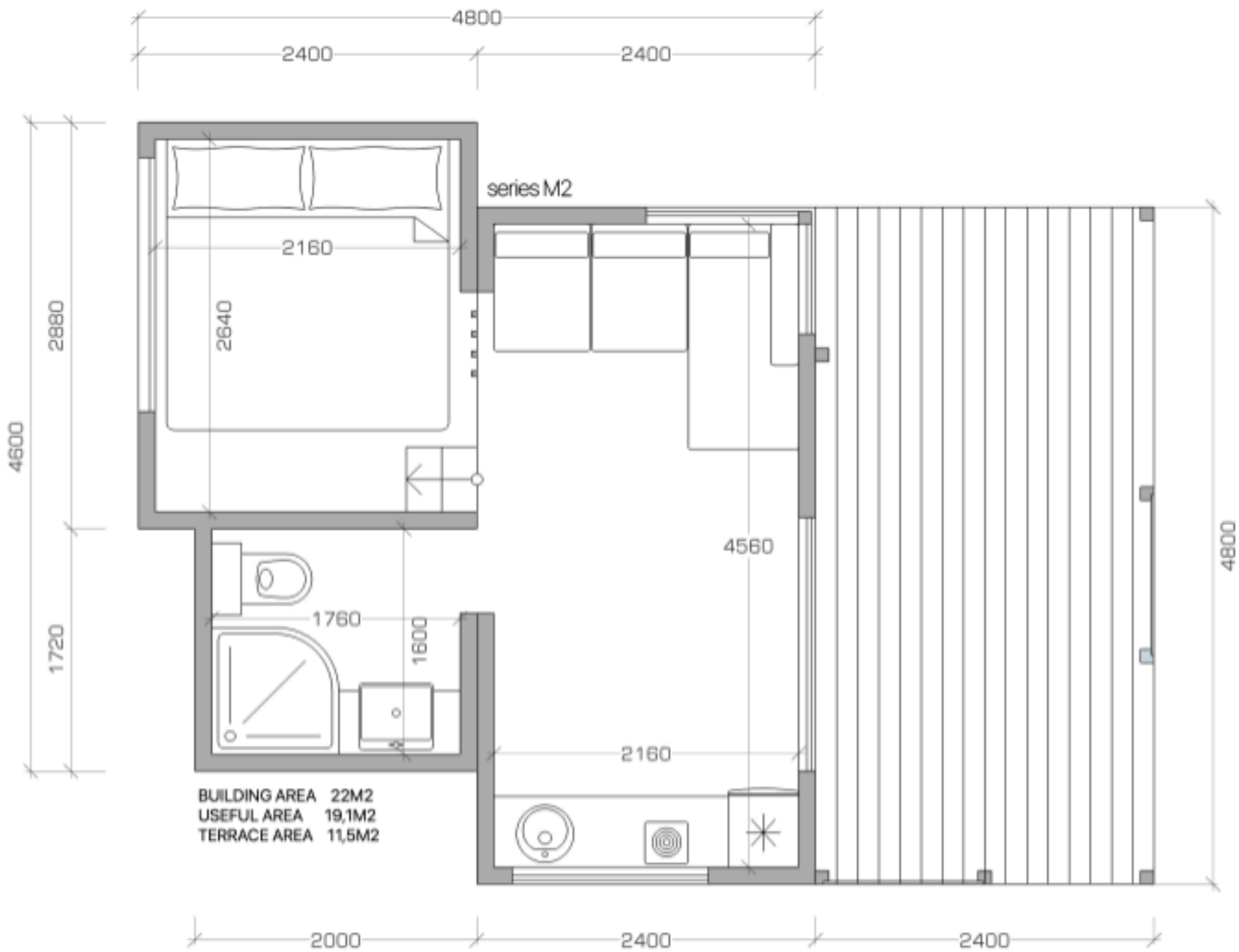


+372 58 961 686



eestihouse.com





@eestihouse



+372 58 961 686



eestihouse.com



	Price
EestiHouse model M2 with terrace in the Comfort package, with full decoration and communications, heating	

* detailed description of the complete set at the end of the catalog



Series L2

Living area - 23,4 m²
With terrace - 34,9 m²



@eestihouse

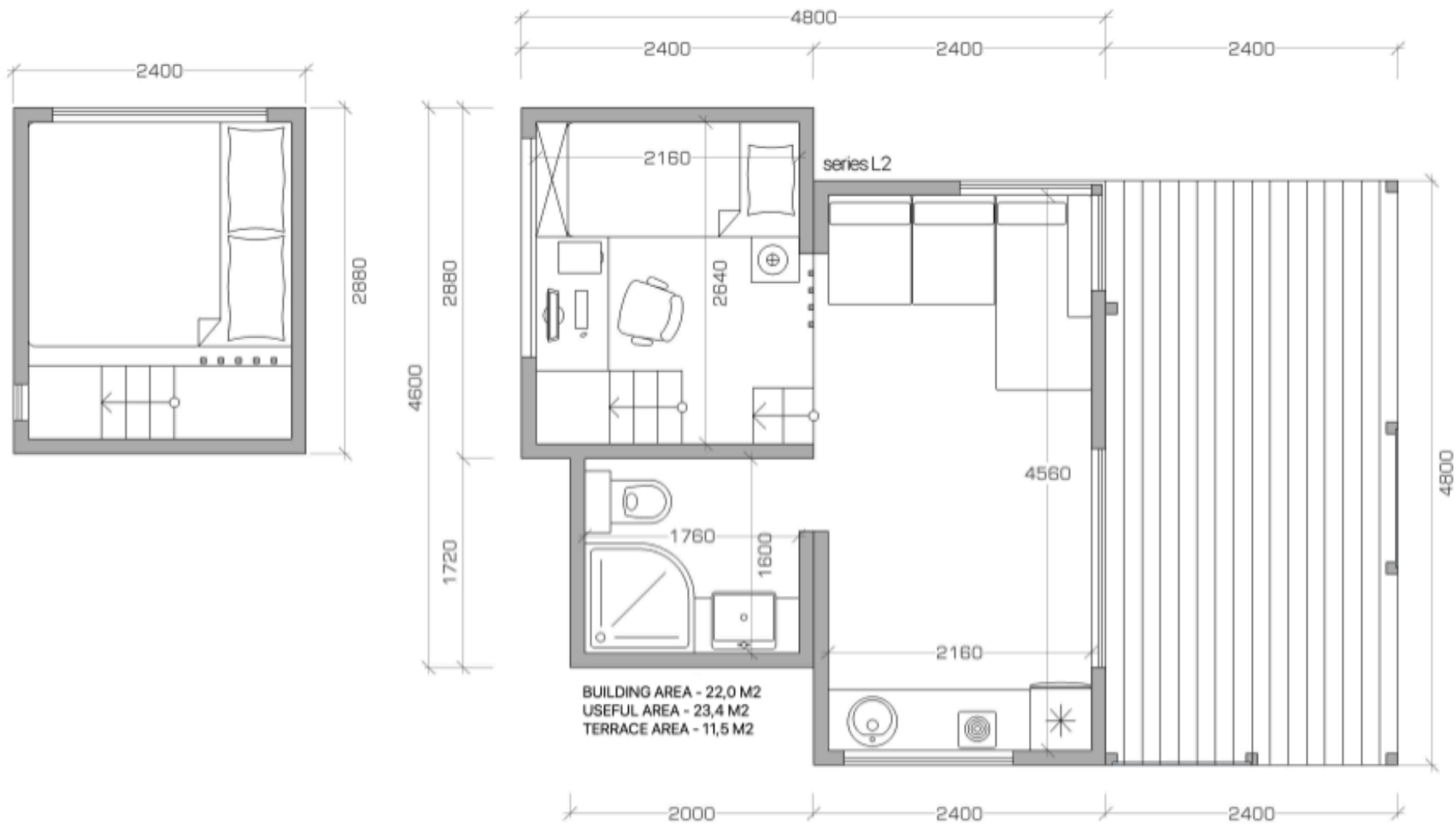


+372 58 96 686



eestihouse.com





@eestihouse



+372 58 961 686



eestihouse.com



	Prices
EestiHouse model L2 with terrace in the Comfort package, with full decoration and communications, heating	

* detailed description of the complete set at the end of the catalog

Complete set Basic EestiHouse factory houses

The Basic package is a house with complete interior and exterior decoration, with all internal communications wired (including heating convectors and final lighting devices).

1. Power frame made of dry planed wood, treated with a bioprotective compound
2. Energy-efficient sprayed gapless insulation with thermal conductivity 0.030-0.032 W / (m · K)
3. Structural external and internal cladding of the OSB frame and FSF plywood
4. New generation PVC roof waterproofing coating
5. Exterior wall decoration - wall facade panels FSF and dry planed timber, with a two-tone high-tech Teknos painting
6. Interior wall and ceiling finish - bleached Scandinavian plywood with Teknos protective coating
7. Floor finishing - hard-wearing Egger laminate with additional elements
8. Laminated PVC windows (with energy saving double glazing)
9. Warm PVC entrance door (with energy-saving double glazing)
10. Wall and floor decoration with / u - painted panels and quartz-vinyl / PVC tiles, with decorative elements of larch
11. Lavatory flooring - quartz-vinyl / PVC tiles
12. Internal doors coated with enamel / finishing foil, with additional elements
13. Complete electrical wiring, Schneider Electric sockets and switches, decorative paneling
14. Ceiling and wall sconces
15. Layout of sewer pipes and water supply pipes in the bathroom for a shower, toilet, sink, boiler + outputs for kitchen water supply
16. Heating electric convectors and underfloor heating in the area of the main facade glazing
17. Ventilation valves in the walls
18. Coniferous terrace board covered with German Rehnocoll oil
19. Three entrance steps on a metal base, covered with coniferous decking, protected by German Rehnocoll oil

Furniture and sanitary ware for EestiHouse factory houses

We can completely fill the house with furniture and appliances, and you will be able to move in and live immediately after installation on the site, without wasting time searching and bringing everything you need to fill the house.

Bathroom filling:

1. Cast natural stone shower tray (black)
2. Shower enclosure - glass in black metal edging
3. Shower mixer Grohe
4. Wall-hung toilet with Cersanit installation
5. Water heater Ariston Inox 50 liters
6. Loft floor cabinet and vanity top in solid ash
7. Countertop washbasin and mixer Grohe
8. Contour illuminated mirror
9. Related and consumables, installation

Furniture (individual execution in style of decoration):

1. Kitchen (facades made of varnished plywood, laminated chipboard construction, Egger worktop)
2. Kitchen sink Granula (black quartz)
3. Lex hob (electric, 2 burners)
4. Sink mixer Argo Premium (black chrome)
5. Cooker hood ORE A PLUS (black)
6. Refrigerator Tesler 68 I (black)
7. Bed with convection box and built-in sockets (plywood, varnish)
8. Bedside cabinets or bedside tables (depending on the project)
9. Bar counter (depending on the project)
10. Storage areas (depending on the project)
11. Related and consumables, installation

The complete set with furniture is basic and does not include a sofa, a table and interior items. These positions are selected individually. The cost of a complete set of plumbing fixtures and furniture can be checked with the manager.



**Production of modern houses
without construction on the site**

 www.eestihouse.com

 [instagram.com/eestihouse.com](https://www.instagram.com/eestihouse.com)

 **+372 58 961 686**



Väike-Männiku 3, Tallinn, Harjumaa, Estonia, 11216

